

Coaxial Low Pass Filter

DC to 450 MHz (40 dB Isolation up to 20 GHz)

NEW!
VLFX-450

Maximum Ratings

Operating Temperature	-55°C to 100°C
Storage Temperature	-55°C to 100°C
RF Power Input*	10W max. at 25°C

*Passband rating, derate linearly to 3.5W at 100°C ambient.

Features

- very good isolation, 40 dB up to 20 GHz
- 21 sections
- temperature stable LTCC internal structure
- patent pending
- re-entry frequency > 20 GHz
- rugged stainless steel unibody

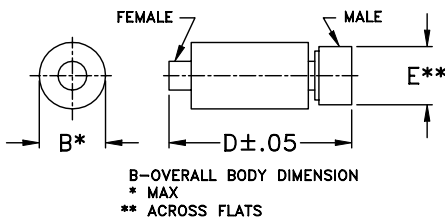


CASE STYLE: FF1118
PRICE: \$ 39.95 ea. QTY (1-9)

Applications

- harmonic rejection
- transmitters/receivers
- lab use
- test instrumentation

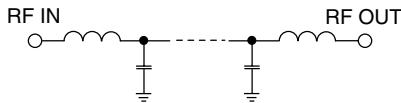
Outline Drawing



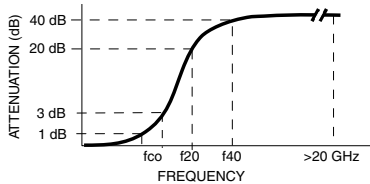
Outline Dimensions (inch/mm)

B	D	E	wt.
.39	2.67	.312	grams
9.91	67.82	7.92	17.0

Functional Schematic



Typical Frequency Response



Low Pass Filter Electrical Specifications @ 25°C

MODEL NO.	PASSBAND (MHz) (Loss < 1.2dB) Max.	fco, MHz Nom (Loss 3 dB) Typ	STOPBAND (MHz) (Loss, dB)		VSWR (:1)		NO. OF SECTIONS
			f20 Min.	f40 Typ.	Stopband Typ.	Passband Typ.	
VLFX-450	DC-450	640	780	950-20000	10	1.15	21

Typical Performance Data @ 25°C

Frequency (MHz)	Insertion Loss (dB)	VSWR (:1)
50	0.31	1.06
175	0.45	1.13
300	0.71	1.09
450	1.00	1.09
500	1.21	1.18
575	1.84	1.38
640	2.93	1.45
685	5.85	1.71
750	18.23	4.33
850	42.71	8.60
1000	39.56	12.52
2000	65.26	44.38
4000	78.45	76.01
6000	69.29	49.69
8000	69.23	49.14
10000	97.72	23.84
12000	70.90	2.73
16000	70.44	11.13
18000	67.17	1.71
20000	60.16	8.17

